



MOKO SMART

Temperature & Humidity Monitoring Door Status Monitoring



L02 Sensor Condition Monitoring

The L02 Sensor, Bluetooth Low Energy technology based, is an all-in-one sensor which contained temperature sensor, hall effect sensor and accelerometer sensor. It can monitor the door status and temperatures of the vehicle or trailer and broadcasts the data via BLE to be picked up by trackers or BLE gateways and transmitted to server eventually.

It can also store 60000 groups of sensor data, which is design in response to industry demands for environment monitoring to resolve losses caused by unallowable temperature deviation and unauthorized opening.



IP67 waterproof



High accuracy sensing



Historical data storage



Rotating replaceable battery

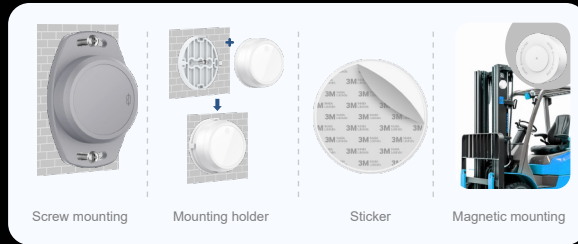


All-in-one sensor integration

What Impressed



Rotating replaceable battery



Multiple adaptive installation

General Specs

Connectivity:	BLE 5.1
Dimensions:	69.9*46.7*18mm (L02) Φ47.3*18mm (L02A)
Color:	Gray (L02), White (L02A)
Material:	PC
IP rating:	IP67
Sensor:	Temperature&Humidity sensor Hall effect sensor Accelerometer sensor Barometric pressure sensor

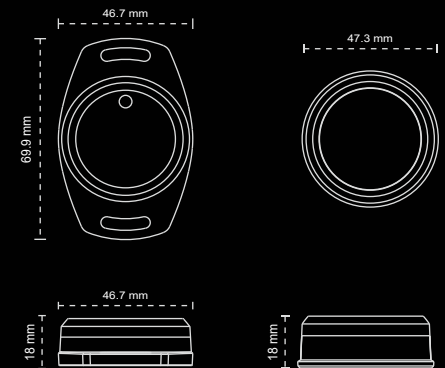
Battery capacity:	1000mAh Replaceable battery
Flash memory:	2M Bytes
Battery lifespan:	5 years
Operating temperature:	-20°C to 60°C (Can be extended to -40°C~85°C)
Transmission range:	Up to 150m (Without any obstacles)
Installation:	L02: Sticker Screw Magnetic mounting L02A: Sticker Bracket Magnetic mounting
Certification:	FCC CE RoHS REACH

Sensor Specs

Temperature & Humidity sensor	
Accuracy tolerance:	±0.5°C(condition: 0°C - 60°C) ±2% RH(condition: 20% - 80% RH)
Resolution:	0.1°C 0.1% RH
History storage:	60000 groups

Barometric Pressure Sensor

Pressure measurement range	30kPa - 125kPa
Relative pressure accuracy	±6Pa



With T&H Sensor

Without T&H Sensor

With T&H Sensor

Without T&H Sensor