



MOKO SMART

# Durable | Ruggedized

## M6 Asset Tracking Tag



The M6, a high-performance Bluetooth asset tracking tag, is designed for industrial applications, offering exceptional structural and installation advantages. Equipped with a large 5200mAh battery, this product boasts an exceptionally 10 years lifespan. Additionally, its moderate size allows for easy deployment on a wide range of industrial assets.

With its water-resistant design, unparalleled broadcasting range and longest battery life, M6 tag can be one of the best choices for asset tracking in warehouse, constructions and logistics.

### Various Installation Methods



① Double-sided tape



② Screws



③ Magnetic mounting

### Features



Magnetic mounting



IP67 waterproof



IK08 shock resistance

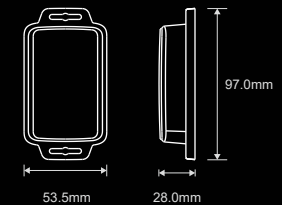


10 years battery life

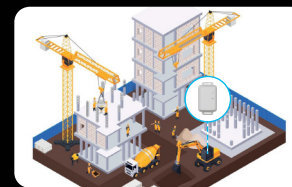
### General Specs

Connectivity:	BLE 5.1
Dimensions (mm):	97.0*53.5*28.0
Color:	Gray
Material:	PC + ASA
Waterproof:	IP67
Shock resistance:	IK08
Sensor:	Accelerometer sensor Hall switch* Temperature sensor (Optional) Flash (Optional)
Battery capacity:	5200mAh (LI-SOCI2)   3200mAh (Alkaline) Replaceable battery
Battery lifespan*:	10 years (LI-SOCI2)   5 years (Alkaline)

Operating temperature:	-20°C to 60°C (Li-SOCI2 battery) 0°C to 40°C (Alkaline battery)
Transmission range:	Legacy mode – 490 feet (150m) Long range mode – 1150 feet (350m)
Installation:	Screw   Sticker   Zip Tie Magnetic mounting (Optional)
Certification:	FCC   CE   RoHS   REACH



### Application



#### Constructions

- Geo-fence alerts
- Asset anti-theft alarm
- Equipment managements



#### Warehouse

- Improve utilization of tools and equipments
- Prevent the use of equipment overdue maintenance or calibration
- Optimize stock levels eliminate shortages



#### Manufacturing

- Raw material tracking
- Turnover box utilization monitoring

\*Lifespan estimated based on standard asset tracking scenario under 25 °C conditions.(0dBm Tx Power | 1000ms ADV interval | iBeacon advertisement)  
\*Hall switch is not applicable for the magnetic mounting version.